

Spirit Falls Fountain Instructions

©Water Wonders, Inc.



Welcome to the Water Wonders family. A few simple steps will ensure that your *Spirit Falls* remains a soothing, enjoyable fountain that brings the sights and sounds of nature to you. Two important considerations when choosing the proper location for your fountain are power source and a sturdy, mounting surface. Before you set your fountain up, decide where you are going to plug in the power cord. The fountain should be plugged into a standard GFI outlet. It can be mounted over a switched outlet if you wish to hide the cord, however a recessed box is not necessary. Because of its light weight, it is not necessary to mount this fountain directly into wall studs.

Helpful Hints

Before getting started, keep in mind these important points which will help ensure a successful installation and smooth operation of your new fountain.

- Always wet slate before turning on pump.
- Do not fill pan closer than 3/4" from the top while it is running as water drains back into pan when the power is off and may cause overflowing.
- Be careful where the fountain is set up. Try not to place the fountain in a spot where it could potentially be bumped into or cause damage. Avoid delicate surfaces that could be damaged by splashing.
- Never use chemicals or copper cleaner on the fountain, as this will ruin the finish.
- Save these instructions for future reference.
- See trouble shooting guide for pump and light maintenance information
- Make sure the light does not stay on for an extended period of time without being submerged in water

TOOLS REQUIRED	HARDWARE INCLUDED
<ul style="list-style-type: none"> • Level • Screwdriver (Philips) • Pencil 	<ul style="list-style-type: none"> • E-Z Ancors (x3) • Zinc #8 x 1-1/2" screws (x3) • Stainless Steel Screws #10 x 3/4"

Spirit Falls Fountain Instructions

©Water Wonders, Inc.

1 HANG THE WALL BRACKET

Note: This wall bracket is designed to be mounted without studs. Ensure wall studs are outside or in-between the mounting holes. When mounting the wall bracket, be sure to use a level. If the fountain is not mounted with a level, it may not run properly. *Spirit Falls* stands 62-1/2" tall. The top of the bracket is also where the top of the fountain will be. To hang the bracket, hold it up to the desired height using a level and mark out the three holes with a pencil. Put the bracket down and insert the E-Z Anchors into these three holes. To insert E-Z Anchors, gently tap the tips into the drywall, and slowly screw in the anchor the rest of the way. Be careful not to over-tighten. Now mount the bracket with the zinc screws. The lip of the bracket points upwards.



2 PREPARE THE BACK OF THE FOUNTAIN

Remove the fountain from it's crate, and the pan from it's box. Carefully lay the fountain on it's face, using the provided foam to protect it from damage. Connect the light cord to the transformer that is in the pan box. Connect the transformer to the white cord on the back of the pan.



Remove the clear tape that is holding the pump in place. Prepare to lift the fountain and the pump into the pan.



Spirit Falls Fountain Instructions

©Water Wonders, Inc.

3 SET THE FOUNTAIN INTO THE PAN

TWO PEOPLE ARE REQUIRED. Set the pan on the ground, open end up. One person must lift the fountain up, and drop the pump into the pan while lowering the fountain. The arrows below indicate the bracket inside the pan that accepts the bottom of the fountain.

With one person holding the fountain and lowering it into the pan, the second person must guide the fountain into the copper channel in the pan. Lower the fountain into the pan until it is completely and evenly seated in the copper channel. Total height should be 62-1/2" tall. **DO NOT LET GO OF THE FOUNTAIN.**



Now take the two stainless steel screws that came in the plastic bag with the transformer and secure the pan to the fountain frame using a screwdriver or drill gun. Use the pre-drilled holes. **DO NOT LET GO OF THE FOUNTAIN.**

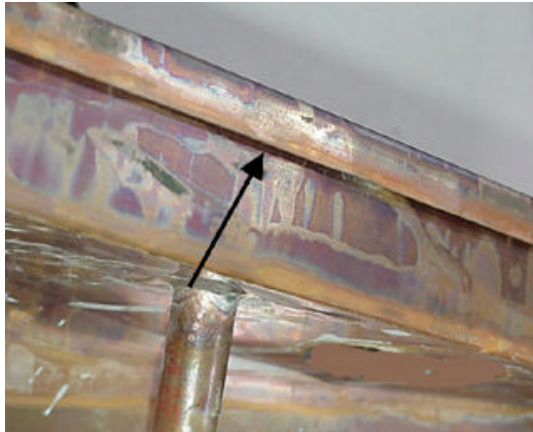


Spirit Falls Fountain Instructions

©Water Wonders, Inc.

4 MOUNT THE FOUNTAIN

If you are plugging in the white cord into a switched outlet behind the fountain, do so at this time. Make sure that the outlet is switched off. If the fountain is going to be plugged into an outlet below the fountain, extend the proper length of the white cord below the bottom of the fountain. Lift the fountain and hang it from the opening at the very top of the fountain (see photo below) onto the wall bracket. The picture below shows the lip where the fountain is hung from. Make sure the fountain is completely seated onto the wall bracket.



4 INSTALL THE SPLASHGUARD

Before installing the splashguard, connect the pump nozzle to the vinyl tubing inside the pan. This is a compression fit and requires no clamping. The copper splashguard fits into the slots on each side of the fountain frame, fitting the contour of the fountain.



5 FILL WITH WATER

Fill the reservoir pan with water, up to within 3/4" from the top of the pan. Wet the slate with a spray bottle, and plug the fountain in. Any splashing that occurs when the fountain is running can be reduced by raising the splashguard higher in the siderails.

Spirit Falls

Fountain Instructions

©Water Wonders, Inc.

Maintenance:

- Check the water in your fountain periodically – about as often as you would water your houseplants - for a water level of 3/4” from the top of the pan. Water will evaporate from the fountain and adversely affect the performance of the water pump, which **MUST** be completely submerged for proper operation and longevity. **NEVER ALLOW YOUR WATER PUMP TO OPERATE DRY!**
- WT 300 pumps are designed to provide exceptional pumping capacity with minimal maintenance. **Please read the manufacturer’s instruction sheet for important safety, operation, maintenance and warranty information.**
- We have carefully hand-applied a patina finish to your fountain’s copper components. If you like this finish as much as we do, it can be protected from natural oxidation by applying Pledge or another household wax with a soft cloth. **DO NOT USE COPPER CLEANER,** as this will remove the patina, leaving the original bright copper finish. If you begin to see specks of green oxidation on the treated copper, it’s time for more wax. However, should you wish not to preserve our finish, simply do nothing and allow nature to perform its own permanent patina.
- **Warning:** Petroleum based oils, including petroleum based fragrances, should never be used in this fountain as they will cause permanent damage.

Trouble-shooting:

- *Pump is too noisy:* Be sure the pump’s output nozzle is securely inserted into the fountain’s clear intake tube as forced water escaping the connection may cause unwanted air bubble noise. Make sure the pump is completely submerged. Also, a scotchbrite pad can be placed underneath the pump to dampen any noise that may occur.
- *Uneven water flow:* The fountain must be mounted level. Spray the dry surfaces of the slate until water flows evenly. Fountain will perform best when allowed to run continuously.
- *Water does not flow:* Make sure pump output nozzle is inserted into rubber intake tube, pump is completely submerged and the power receptacle is switched to an “ON” position.
- If the pump ever needs to be replaced, cleaned, or repaired, the fountain needs to be drained and taken off of the wall. On the back side of the fountain, there are two screws that hold the pan to the frame. Remove these screws and access to the pump will be gained.

Bulb Replacement: If the bulb of the fountain should burn out, contact Water Wonders for a replacement. **RUBBER GLOVES MUST BE**

Spirit Falls

©Water Wonders, Inc.

Fountain Instructions

WORN TO PROTECT THE BULB WHEN REPLACING. Pull the clear plastic cover off of the bulb, remove the old bulb, and replace it with a new one. Replace the plastic cover when finished.

Note: Although Water Wonders Fountains are designed not to splash, sweating from condensation and splashing droplets can occur if set up incorrectly. As a precaution against water stains, please protect fine surfaces under and near fountain.

If you have any questions regarding the set-up or maintenance of your fountain please call our customer service department at 800-549-1880.